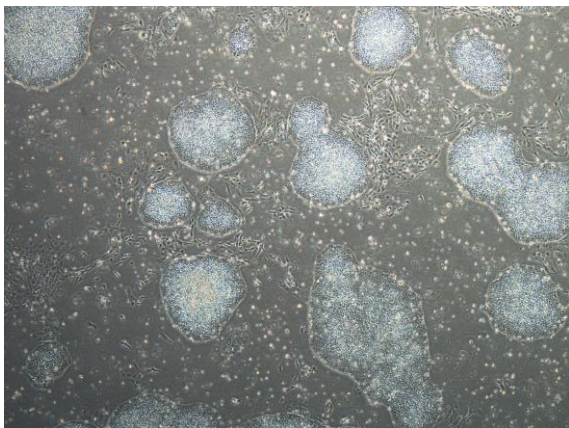
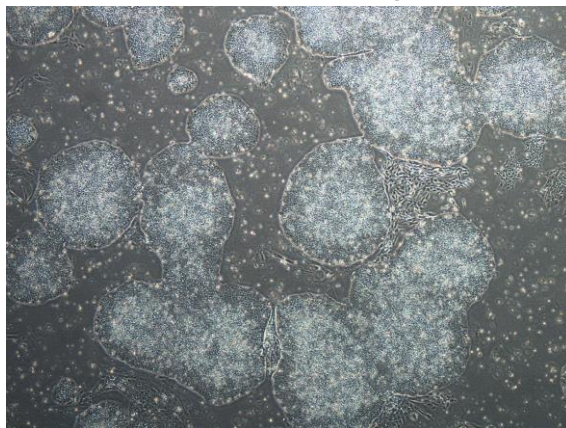


【 CiRA-j-1023 】 Morphology of iPSC colonies

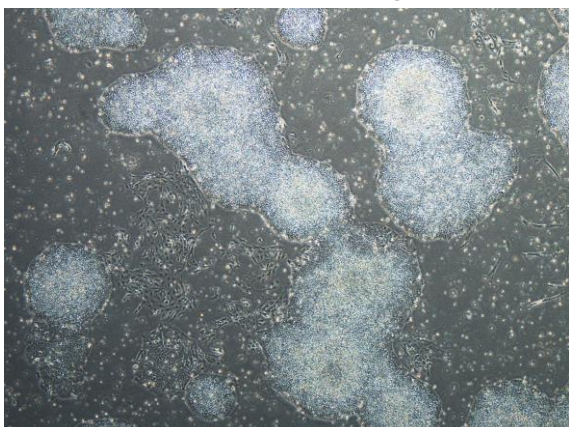
CiRA-j-1023-A: passage-2



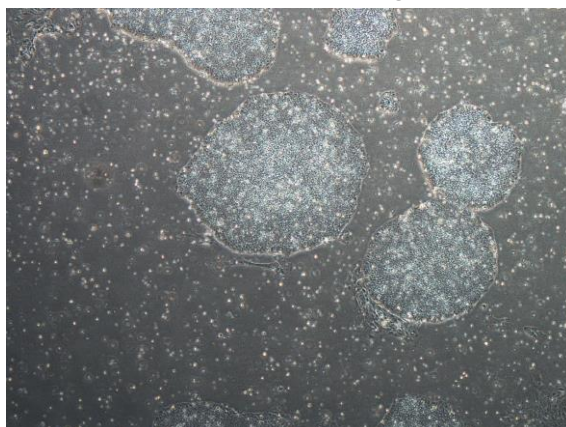
CiRA-j-1023-B: passage-2



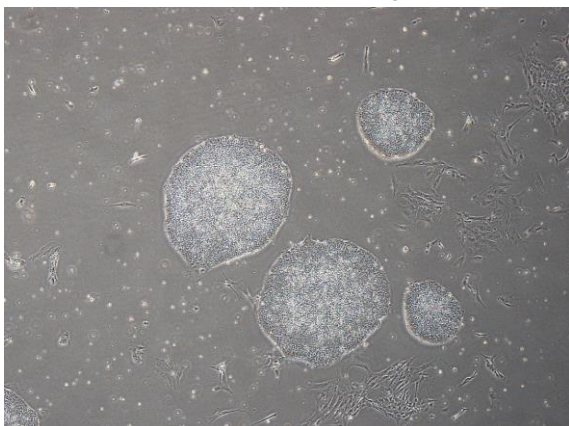
CiRA-j-1023-C: passage-2



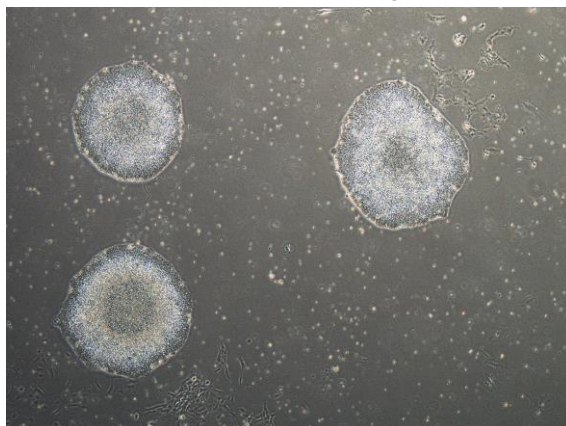
CiRA-j-1023-D: passage-2



CiRA-j-1023-E: passage-2



CiRA-j-1023-F: passage-3



(All images were captured at 4x magnification)